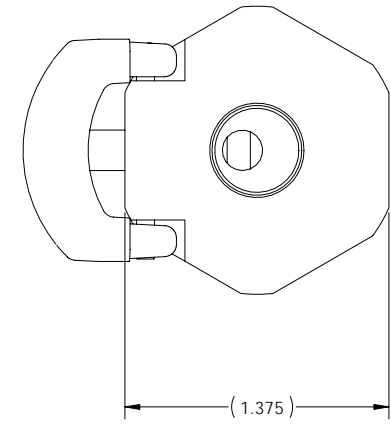
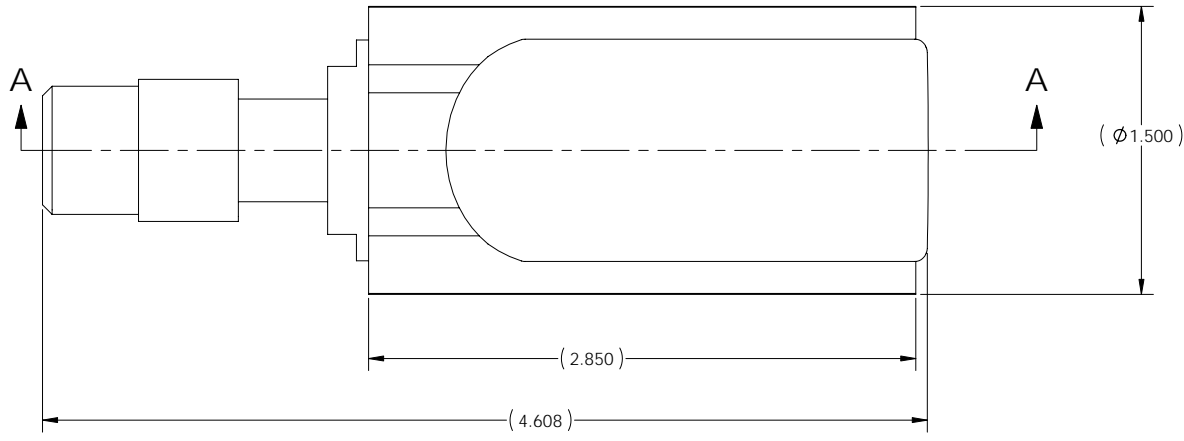


NOTES, UNLESS OTHERWISE SPECIFIED

REV	ZONE	DESCRIPTION	APPROVED	DATE
-		INITIAL RELEASE		



ITEM NO.	QTY.	PART NO	DESCRIPTION
1	1	100111	COMPRESSION SPRING
2	2	100114	DOWEL PIN, HARDENED .0625 X .25
3	1	100103	SPINDLE
4	1	100104	BEARING CUP, INPUT
5	1	100105	BEARING CUP, EXHAUST
6	1	100108	VANE HOUSING
7	1	100102	BEARING CAP
8	1	100110	VALVE STEM
9	1	100115	VALVE BODY
10	1	500103	COLLET BODY ASSEMBLY
11	7	100112	VANE
12	1	100113	WASHER, VENTED
13	1	100101	LEVER
14	1	100109	AS568A-007 ORING
15	1	100143	DOWEL PIN 3/32 X 1.125, HARDENED
16	1	100100	HOUSING, DIE GRINDER
17	1	100107	BALL BEARING .875 OD X .375 ID X .281
18	1	100106	BALL BEARING .625 OD X .25 ID X .196

APPROVED		DATE	Franklin W. Olin College of Engineering				
PREP BY	D. ANDERSON	12/16/05	DIE GRINDER ASSY				
CHECKED							
RESP ENG	D. ANDERSON						
MFG ENG							
QUAL ENG			SIZE	FSCM NO.	PART NO.	PART REV	DOC REV
			C		500101	-	
REMOVE ALL BURRS AND SHARP EDGES .005 R OR CHAMFER MAX			SCALE	2:1	WT	0.8028	SHEET 1 OF 2
♦ = (CRITICAL DIMENSION)							

ALL DIMENSIONS ARE IN INCHES- INTERPRET
DRAWING PER ASME Y14.5 -1994

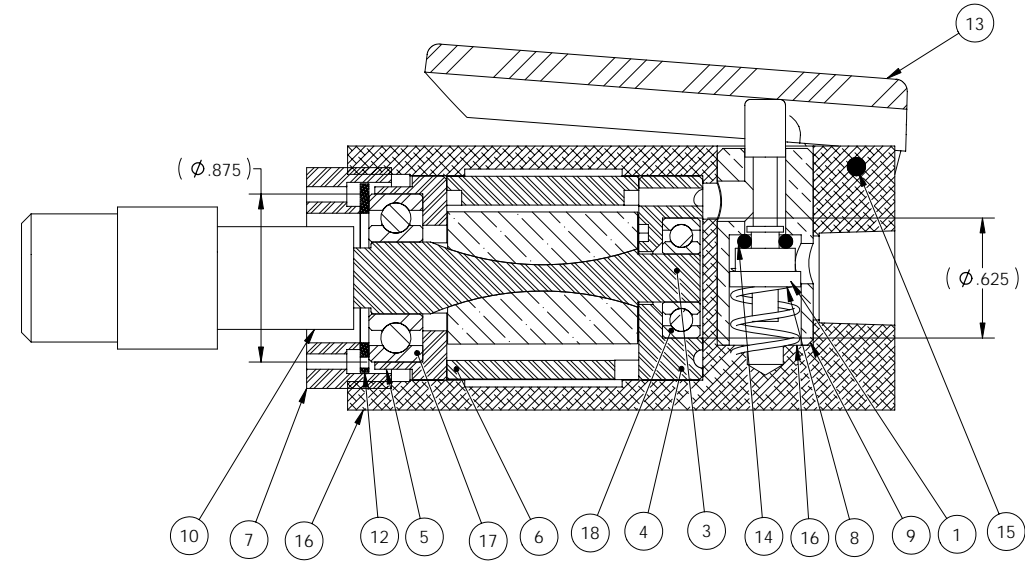
TOLERANCES UNLESS OTHERWISE SPECIFIED:

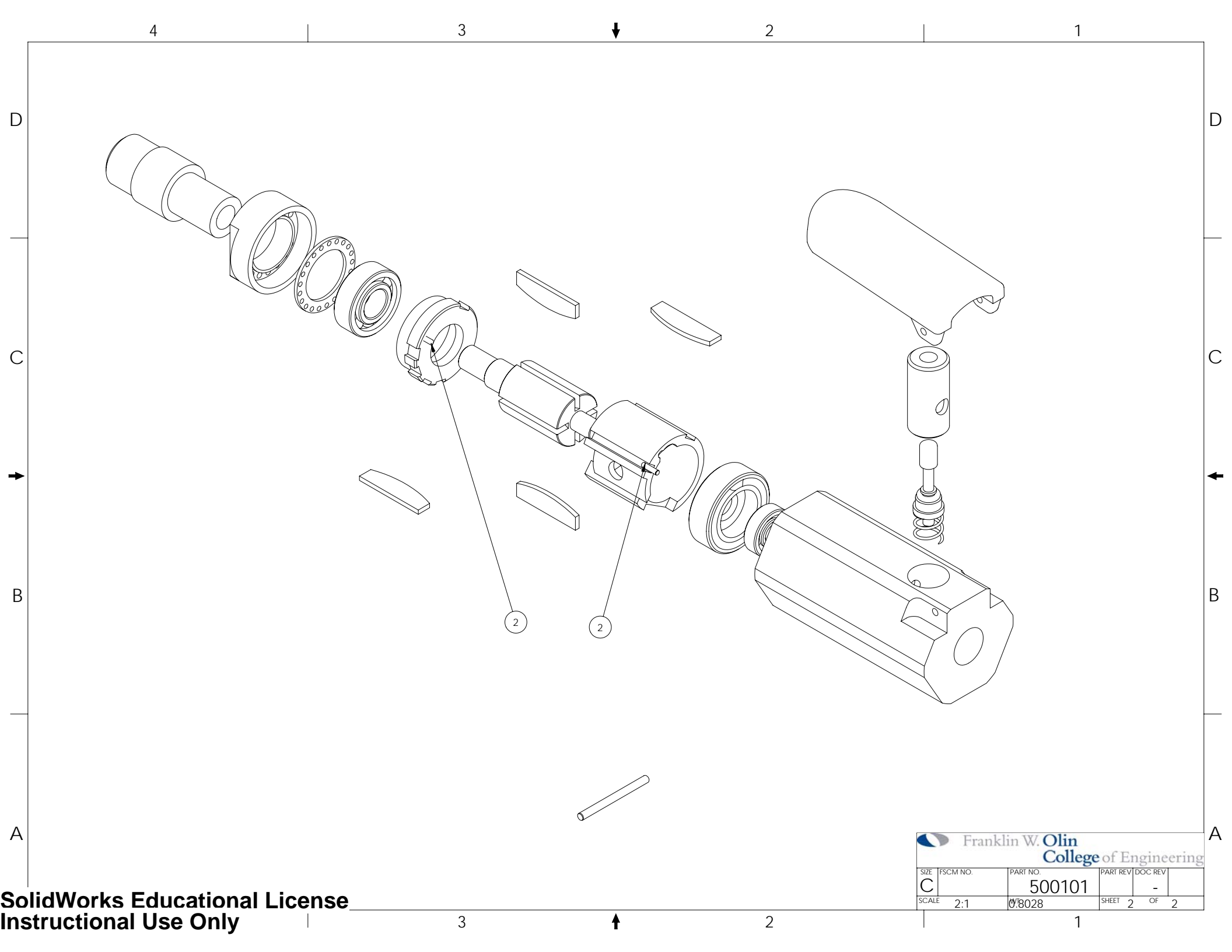
X.X ± .03 ∠ ± .5°

X.XX ± .01 125/

X.XXX ± .005

SECTION A-A





SIZE	FSCM NO.	PART NO.	PART REV	DOC REV	
C		500101		-	
SCALE	2:1	0/8028	SHEET 2	OF 2	