

4

3

↓

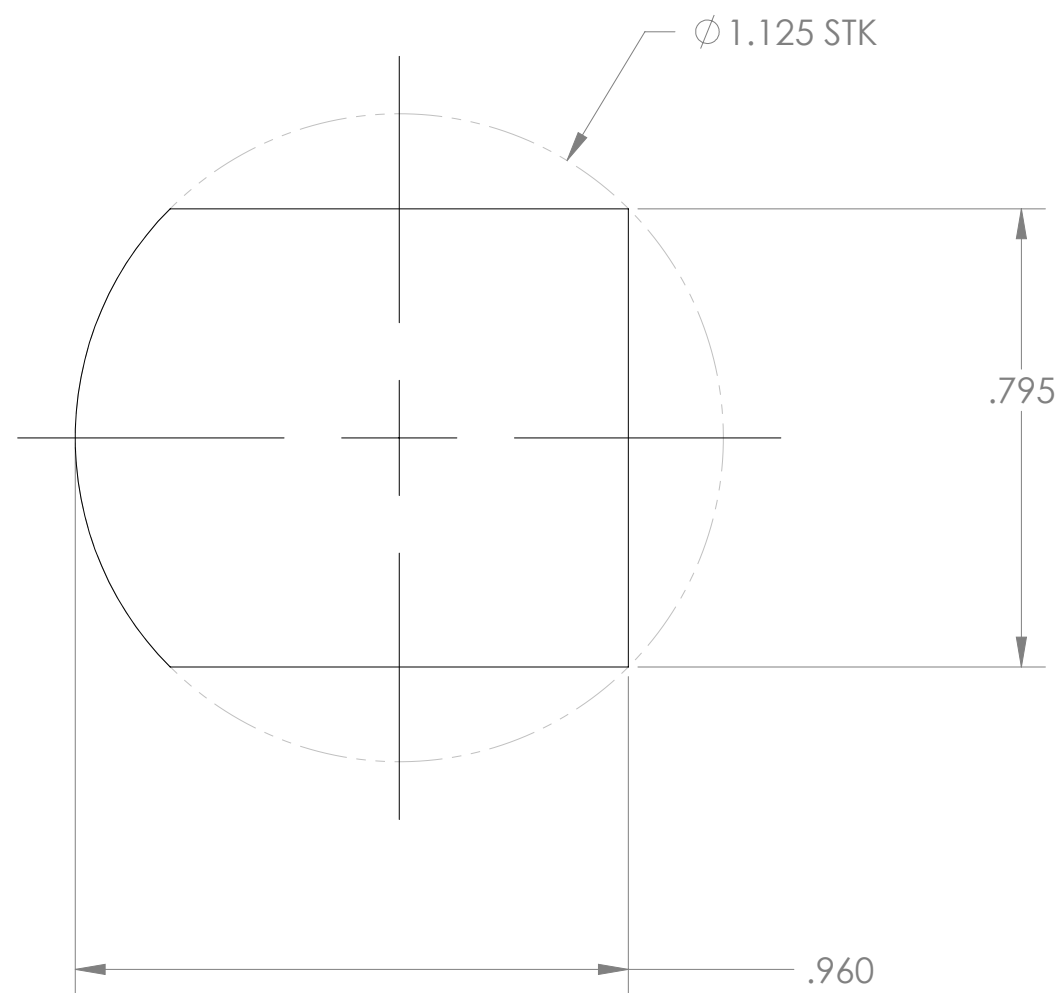
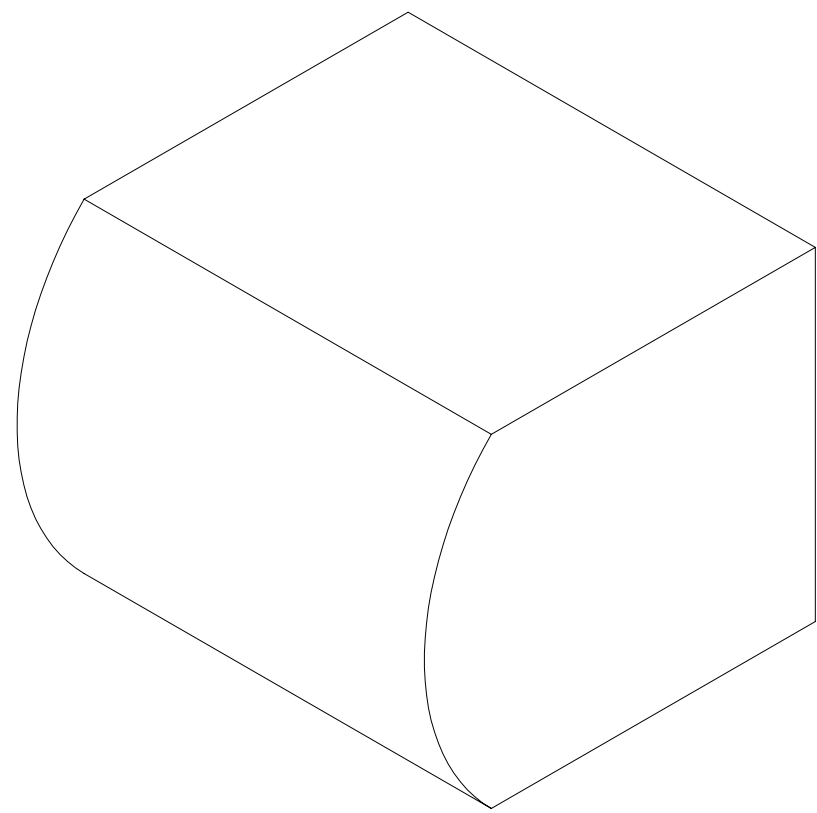
2

1

NOTES, UNLESS OTHERWISE SPECIFIED

- 1. UNSPECIFIED FILLET RADII .005-.010.
- 2. MATERIAL: AL BAR 6061-T651
- 3. THREADS PER ANSI B1.1.

REV	ZONE	DESCRIPTION	APPROVED	DATE
-		INITIAL RELEASE		



ALL DIMENSIONS ARE IN INCHES- INTERPRET DRAWING PER ASME Y14.5 -1994

TOLERANCES UNLESS OTHERWISE SPECIFIED:  
 X.X ± .03     <math>\angle \pm .5^\circ</math>  
 X.XX ± .01  
 X.XXX ± .005     125/

REMOVE ALL BURRS AND SHARP EDGES  
 .005 R OR CHAMFER MAX

APPROVED	DATE
PREP BY D. ANDERSON	1/19/06
CHECKED	
RESP ENG D. ANDERSON	
MFG ENG	
QUAL ENG	

Franklin W. Olin College of Engineering

**PROJECT 2B  
HAND FILING**

SIZE <b>C</b>	FSCM NO.	PART NO. <b>1000-02</b>	PART REV	DOC REV <b>A</b>
SCALE 3:1	WT 0.07	SHEET 1	OF 1	

4

3

↑

2

1

D

C

B

A

D

C

B

A