

4

3

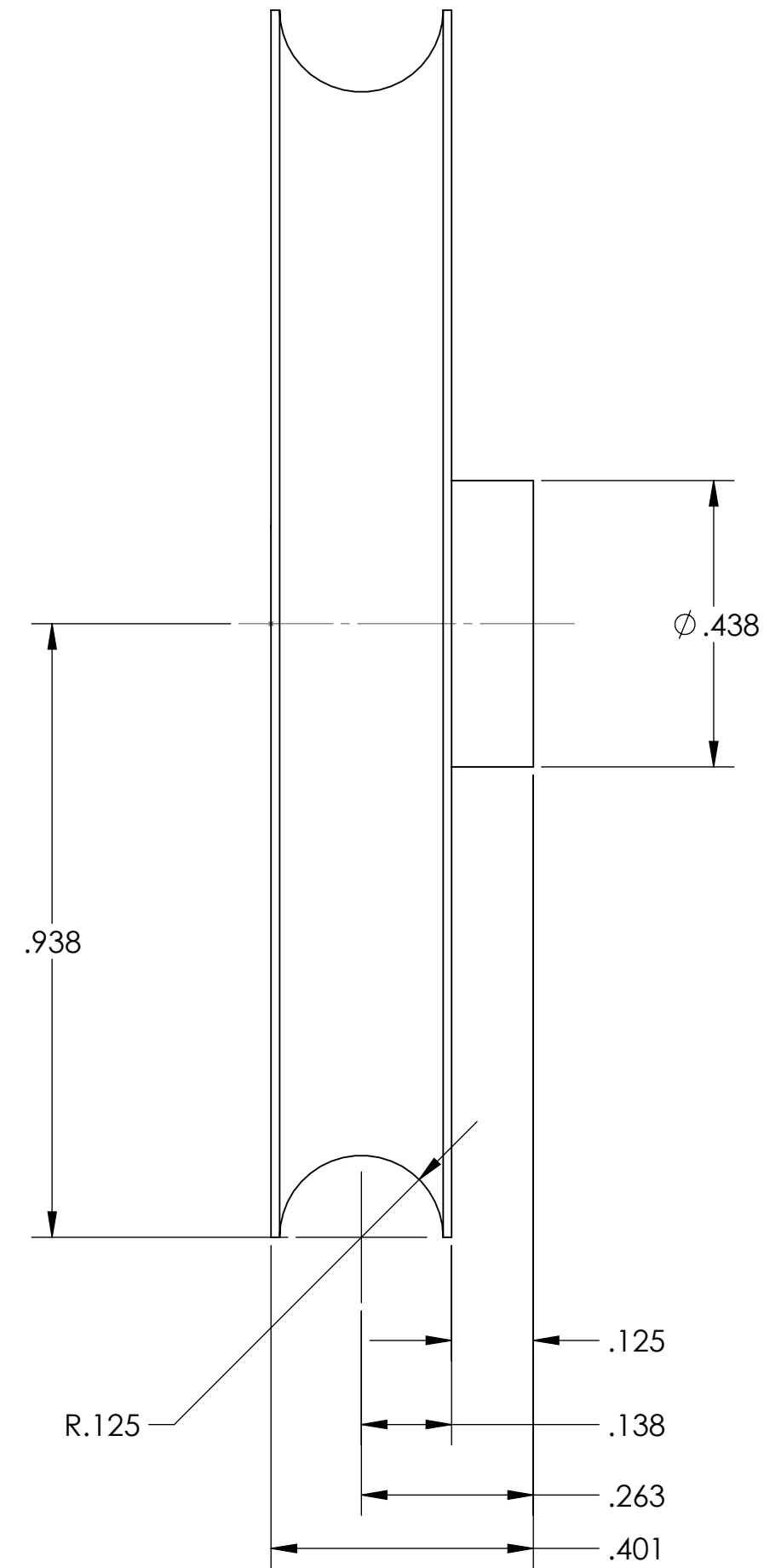
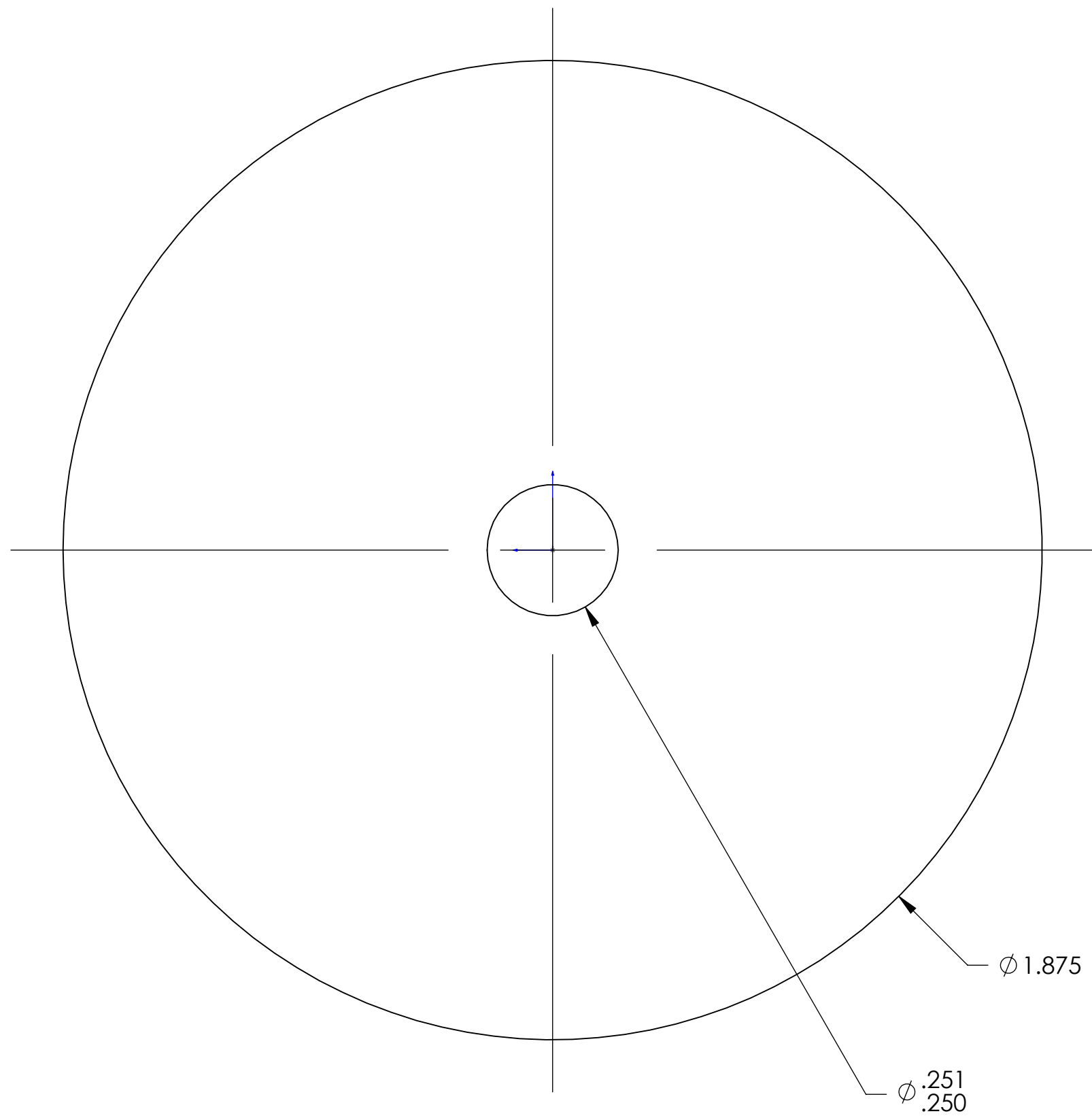
2

1

NOTES, UNLESS OTHERWISE SPECIFIED

- 1. UNSPECIFIED FILLET RADII .005-.010.
- 2. MATERIAL: AL BAR 6061-T651
- 3. THREADS PER ANSI B1.1.

REV	ZONE	DESCRIPTION	APPROVED	DATE
-		INITIAL RELEASE		



ALL DIMENSIONS ARE IN INCHES- INTERPRET DRAWING PER ASME Y14.5 -1994

TOLERANCES UNLESS OTHERWISE SPECIFIED:

X.X ± .03    <math>\angle \pm .5^\circ</math>

X.XX ± .01

X.XXX ± .005    125/

REMOVE ALL BURRS AND SHARP EDGES .005 R OR CHAMFER MAX

APPROVED	DATE
PREP BY K. BERRY	11/2/2014
CHECKED	
RESP ENG	
MFG ENG	
QUAL ENG	



### PULLEY, OUTPUT SHAFT

SIZE <b>C</b>	FSCM NO.	PART NO.	PART REV	DOC REV <b>02</b>
SCALE 4:1	WT 0.06	SHEET 1	OF 1	

◆ = (CRITICAL DIMENSION)

4

3

2

1

D

C

B

A

D

C

B

A