

4

3

↓

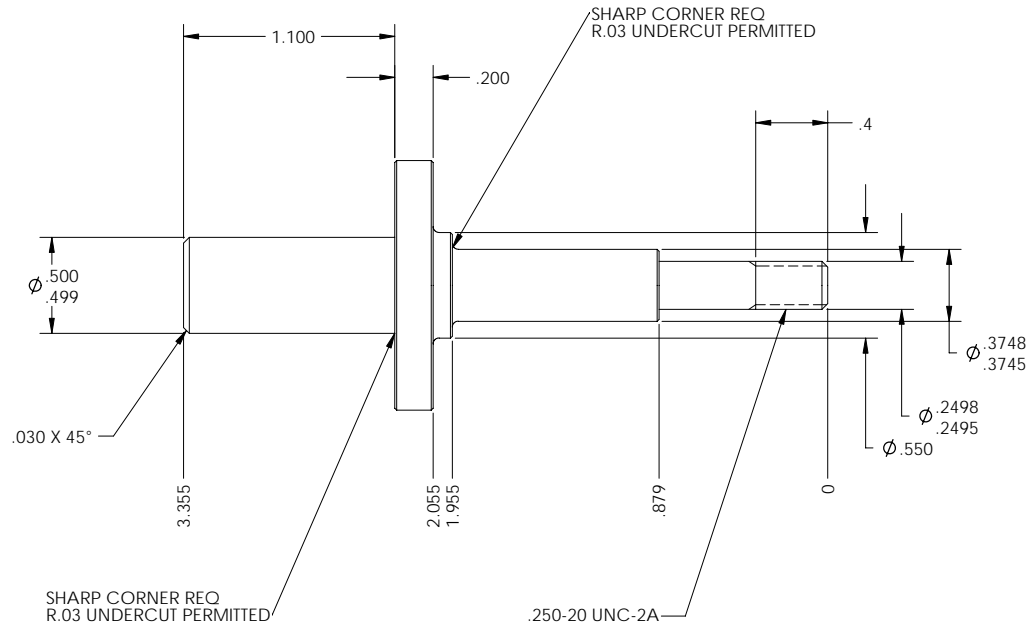
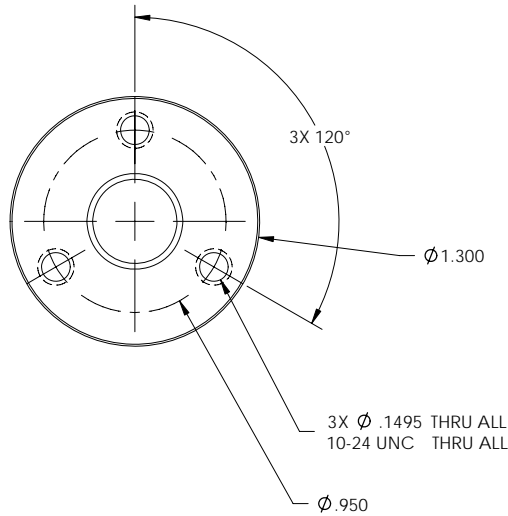
2

1

NOTES, UNLESS OTHERWISE SPECIFIED

- 1. UNSPECIFIED FILLET RADII .005-.010.
- 2. MATERIAL: 416SS RC 28 MIN.
- 3. THREADS PER ANSI B1.1.

REV	ZONE	DESCRIPTION	APPROVED	DATE
-		INITIAL RELEASE		



ALL DIMENSIONS ARE IN INCHES- INTERPRET DRAWING PER ASME Y14.5 -1994

TOLERANCES UNLESS OTHERWISE SPECIFIED:

X.X ± .03 ∠ ± .5°

X.XX ± .01

X.XXX ± .005 125/

REMOVE ALL BURRS AND SHARP EDGES .005 R OR CHAMFER MAX

APPROVED	DATE
PREP BY D. ANDERSON	
CHECKED	
RESP ENG D. ANDERSON	
MFG ENG	
QUAL ENG	

Franklin W. Olin
College of Engineering

SHAFT, ROTOR

SIZE C	FSCM NO.	PART NO.	PART REV 01	DOC REV
SCALE 2:1	WT 0.19	SHEET 1	OF 1	

◆ = (CRITICAL DIMENSION)

4

3

↑

2

1

D

C

B

A

D

C

B

A